

# Z5s

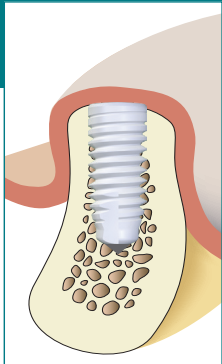
The revolutionary screwed-in bone-level solution



Length in mm

Ø 5,0 mm

- 8 Z5s-50-08
- 10 Z5s-50-10
- 12 Z5s-50-12



Abutments	Healing caps	Gingiva former
-----------	--------------	----------------



Z5s-A00-G10, Z5s-A15-G10m, Z5s-A00-T20

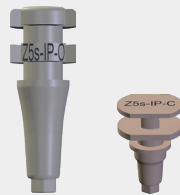


Z5s-HC50



Z5s-G10, Z5s-G20, Z5s-G30

Impression caps	Laboratory analogue	Instruments
-----------------	---------------------	-------------



Z5s-IP-O, Z5s-IP-C



Z5s-L



Z5s-HA\*, Z5s-RA12 incl. screw, Z5s-RA16 incl. screw, Z5s-SD-T6, Z5s-SD-T6-L

\* Their application requires previous experience with manual insertion instruments.

