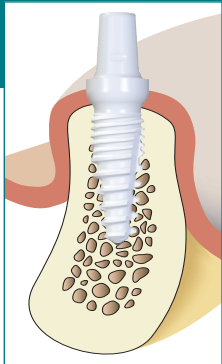


Z5m(t)

The implant for immediate implantation and soft bone qualities



	Ø 4,0 mm	Ø 5,0 mm
Length in mm		
8	Z5m(t)-40-08	Z5m(t)-50-08
10	Z5m(t)-40-10	Z5m(t)-50-10
12	Z5m(t)-40-12	Z5m(t)-50-12

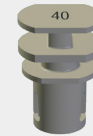


Gingiva former



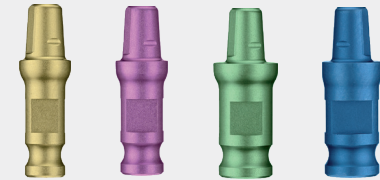
G36, G40, G50, G50R, G36-0,
G40-0, G50-0, G50R-0

Impression caps



I36, I40, I50, I50R

Laboratory analogue



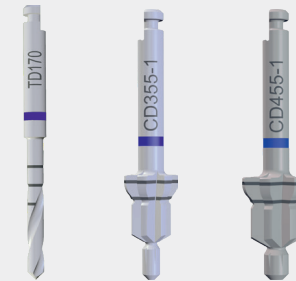
L36, L40, L50, L50R

Instruments



HA12, RA16*, RA24*

Drills



TD170, CD355-1, CD455-1

*also for safe handling of the Z5c abutment when gluing in

