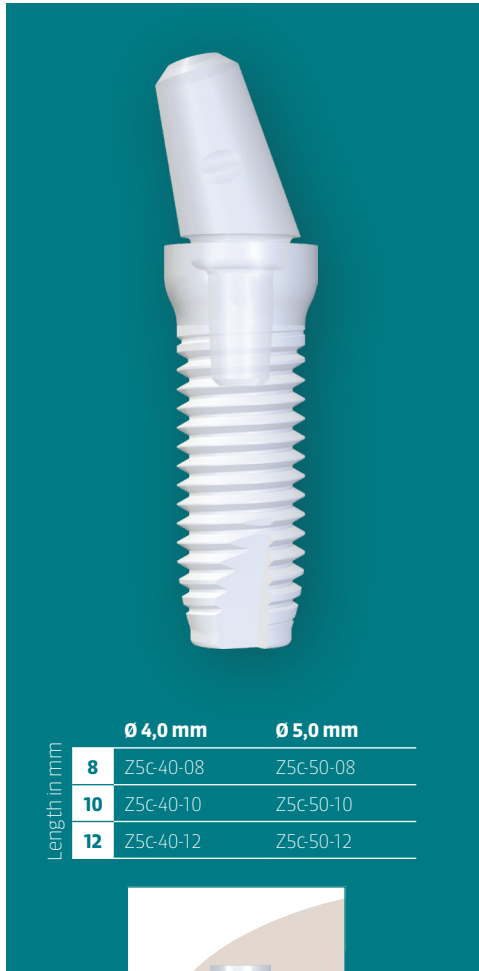
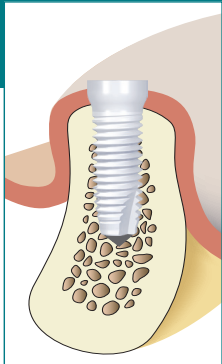


Z5c

The successful implant for cemented tissue-level restoration



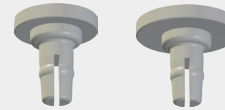
	Ø 4,0 mm	Ø 5,0 mm
Length in mm		
8	Z5c-40-08	Z5c-50-08
10	Z5c-40-10	Z5c-50-10
12	Z5c-40-12	Z5c-50-12



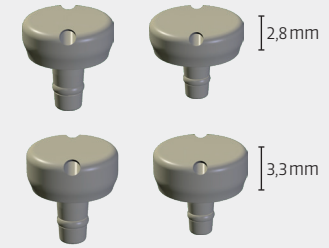
Abutments Healing caps Gingiva former



Z5c-A00-4mm, Z5c-A00,
Z5c-A15-4mm, Z5c-A15



Z5c-HC40, Z5c-HC50



Z5c-G40-28, Z5c-G50-28,
Z5c-G40-33, Z5c-G50-33

Instruments



Z5c-HA12*, Z5c-RA12, Z5c-RA16, Z5c-RA12-1 incl. screw, Z5c-RA16-1 incl. screw

* Their application requires previous experience with manual insertion instruments.

